

WINDOWS COLLECTION



F E N Ê T R E S
CONCEPT

Crafted locally,
for our community.

PVC CASEMENT WINDOW



EASY MAINTENANCE!

You can easily wash the exterior of the window from inside the house, thanks to a 90-degree opening that gives you maximum space.

**AVAILABLE IN EMERGENCY
EXIT (EGRESS) VERSION**

Innovative anti-torsion system

- 7/8" double-sealed insulated thermal unit (thermopane)
- Stainless steel hardware
- Fiberglass screen with profiled aluminum frame
- Available in 5 1/4" and 6 9/16" frames



CONTEMPORARY
sash



COLONIAL
sash



Photos for illustrative purposes only.

HYBRID CASEMENT WINDOW



STANDARD COLOURS

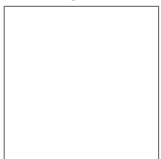
All our hybrid products, such as windows, sash dividers and grids are available in four colours.



Commercial
Brown



Charcoal



White



Black

A wide selection of colours is also available as an option to complement your decor.

**AVAILABLE IN EMERGENCY
EXIT (EGRESS) VERSION**



Innovative anti-torsion system

Structural assembly

5 1/2" hybrid PVC/aluminum frame

- 7/8" double-sealed insulated thermal unit (thermopane)
- Stainless steel hardware
- Fiberglass screen with profiled aluminum frame



CONTEMPORARY
sash



COLONIAL
sash



PVC/HYBRID AWNING WINDOW



Awning operator (scissor)



CONTEMPORARY
sash



COLONIAL
sash

Awning windows are available in addition to our collection of casement windows and come in PVC and aluminum hybrid models.

AVAILABLE FRAMES:

- 5 1/4" PVC
- 6 9/16" PVC
- 5 1/2" hybrid

COLOUR SELECTION FOR HYBRID MODEL:

Black, White, Charcoal, Commercial Brown

FIXED PVC WINDOW



- 4 1/2", 5 1/4" or 6 9/16" PVC frame with a glossy finish
- 7/8" double-sealed insulated thermal unit (thermopane) with LOW-E Argon
- 1 1/4" triple-sealed insulated thermal unit (thermopane) with LOW-E Argon (optional)
- Dust-proof seal
- Brickmould (optional)

FIXED HYBRID WINDOW



- 5 1/2" frame
- 7/8" double-sealed insulated thermal unit (thermopane) with LOW-E Argon
- 1 1/4" triple-sealed insulated thermal unit (thermopane) with LOW-E Argon (optional)
- Dust-proof seal
- Brickmould (optional)

COLOUR SELECTION:

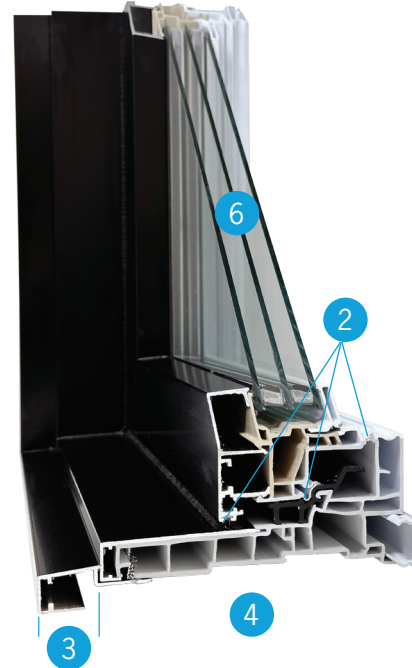
Black, White, Charcoal, Commercial Brown





PVC CASEMENT WINDOW, 4 1/2", 5 1/4", 6 9/16" FRAME HYBRID CASEMENT WINDOW, 5 1/2" FRAME

- 1 7/8" double-sealed insulated thermal unit (thermopane) with LOW-E Argon
- 2 Triple weather stripping
- 3 PVC integrated brickmould, non-integrated aluminum hybrid (optional)
- 4 5 1/4" PVC and 5 1/2" aluminum frame
- 5 PVC-cladded pine extension jamb (optional)
- 6 1 1/4" triple-sealed insulated thermal unit (thermopane) with LOW-E Argon (optional)



Stainless-steel lock
and anchor



Single stainless steel
operating arm with
retractable handle



Structural assembly



Glossy PVC finish

PVC/HYBRID SLIDING WINDOW



[SINGLE OR DOUBLE]



SLIDING WINDOW

Available with one or two opening sashes

- White PVC or PVC/aluminum hybrid window
- Optional half-size screen for double sliding window
- Triple weather stripping
- 7/8" double-sealed insulated thermal unit (thermopane) with LOW-E Argon
- 1 1/8" triple-sealed insulated thermal unit (thermopane) with LOW-E Argon (optional)

COLOUR SELECTION FOR HYBRID MODEL:



Commercial
Brown



Charcoal



White



Black



CONTEMPORARY
or **COLONIAL** sash
single or double



CONTEMPORARY
or **COLONIAL** sash
single



COLONIAL sash
double



EASY MAINTENANCE

The sashes tilt inwards for easy cleaning



GLIDES WITH EASE

Nylon tandem rollers



AUTOMATIC LOCKING MECHANISM

when closing



THE DOUBLE PVC SLIDING WINDOW IS AVAILABLE IN THE COLONIAL MODEL ONLY

PVC/HYBRID HUNG WINDOW



[SINGLE OR DOUBLE]



PVC AND HYBRID HUNG WINDOW

Available with one or two opening sashes.

- White PVC or PVC/aluminum hybrid window
- Optional half-size screen for double sliding window
- Triple weather stripping
- 7/8" double-sealed insulated thermal unit (thermopane) with LOW-E Argon
- 1 1/8" triple-sealed insulated thermal unit (thermopane) with LOW-E Argon (optional)
- Balance: Protected constant force spring

Frame sizes available: 5 1/4" PVC and 5 1/2" hybrid

COLOUR SELECTION FOR HYBRID MODEL:



Commercial
Brown



Charcoal



White



Black



CONTEMPORARY
or **COLONIAL** sash
single or double



CONTEMPORARY
or **COLONIAL** sash
single



COLONIAL sash
double



**EASY
MAINTENANCE**
The sashes tilt
inwards for easy
cleaning



**GLIDES WITH
EASE**
Nylon tandem
rollers



**THE DOUBLE PVC SASH WINDOW IS
AVAILABLE IN THE COLONIAL MODEL ONLY**

ARCHITECTURAL WINDOW [PVC/HYBRID]



BOW WINDOW AND BAY WINDOW

The Bow window is available as a complement to the casement windows in our collection. All assembly features are offered in both the CONTEMPORARY and COLONIAL series.

Frame sizes available: 5 1/4" PVC and 5 1/2" hybrid

COLOUR SELECTION FOR HYBRID MODEL:



Commercial
Brown



Charcoal



White



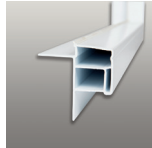
Black



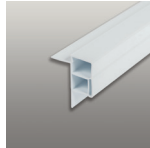


BRICKMOULD

PVC moulding



1" x 1 1/16"



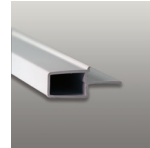
1 3/8" x 1 1/16"



2" x 1 1/16"

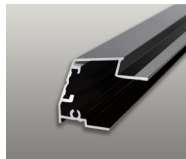


3 7/8" x 1"



3/8" x 1 1/16"

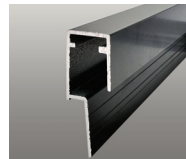
Aluminum moulding



Regular
1" x 1 1/8"



Covered
1 3/8" x 1 1/8"

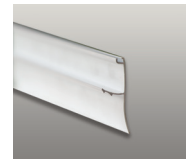


Renovation
7/16" x 1"

Interior / exterior PVC moulding



Groove cover

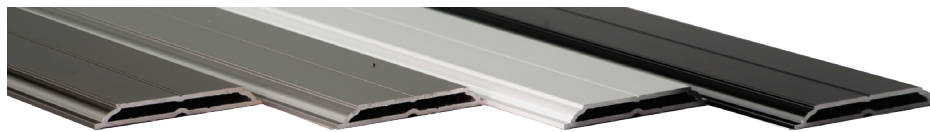


Finishing moulding



Siding adapter

SASH DIVIDERS



2" hybrid aluminum sash dividers



2" or 7/8" PVC sash dividers

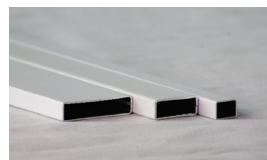
GRIDS

Georgian



1 3/4", 1" and 5/8"

Rectangular



1", 5/8" and 5/16"

Tubular



1/4"

OUR UNMATCHED WARRANTY



Fenêtres Concept

YOUR PEACE OF MIND GUARANTEED



FENÊTRES
CONCEPT

20 years
White PVC and hardware

10 years
Aluminum components
and paint

5 years
Labour

2 years
Spontaneous
thermal breakage

1 years
Screen and
weatherstripping

Insulated thermal unit (thermopane)

Limited lifetime warranty

Stainless-steel hardware is available at no extra charge

At **Fenêtres Concept**, we understand the importance of offering energy-efficient products and are proud to manufacture ENERGY STAR® certified windows.

Find out more about the ideal product to meet these requirements. We have worked with our various suppliers to meet and exceed the program's requirements.



THE KEY = The combination of different sealed insulated thermal unit components.

LOW-E: Glass with a low-emissivity (Low-E) coating is ideal for cold climates. It enhances comfort while promoting energy efficiency.

SPACER: The warm-edge spacer used by Fenêtres Concept features insulating properties that allow us to deliver superior performance.

ENERGY VALUES

Casement window

7/8" double-sealed
1 1/4" triple-sealed

Awning window

7/8" double-sealed
1 1/4" triple-sealed

Sliding window

Left or right opening

7/8" double-sealed
1 1/8" triple-sealed

Sliding window

Two openings

7/8" double-sealed
1 1/8" triple-sealed

Hung window

Bottom opens

7/8" double-sealed
1 1/8" triple-sealed

Hung window

Top and bottom open

7/8" double-sealed
1 1/8" triple-sealed

Fixed panoramic

7/8" double-sealed
1 1/4" triple-sealed

PVC

RE 34
RE 37

RE 34
RE 37

RE 35
RE 38

RE 34
RE 37

RE 35
RE 38

RE 34
RE 37

RE 40
RE 45

HYBRID ALUMINUM

RE 34
RE 36

RE 34
RE 36

RE 35
RE 37

RE 34
RE 35

RE 35
RE 37

RE 34
RE 35

RE 40
RE 45

IMPORTANT: Find out about the glass/LOW-E/spacer combinations to choose from if you want to achieve even greater performance.



www.fenetresconcept.com



Crafted locally, for our community — for over 30 years!

We combine our experience with new technologies to deliver refined designs that enhance the comfort of your home.

OUR WINDOW COLLECTION

Our collection of windows reflects our commitment to design excellence and high performance, exceeding structural and energy efficiency standards. Thoughtfully crafted features ensure seamless integration into your home. At Fenêtres Concept, we take pride in staying ahead of industry trends while leveraging our extensive experience. Built for exceptional quality, durability, and performance, our product range provides lasting confidence and peace of mind.

Your project deserves the expertise we invest in every product!



Note that window colours shown in this brochure may vary from the finished product. We reserve the right to modify our products at any time. Photos for illustrative purposes only.